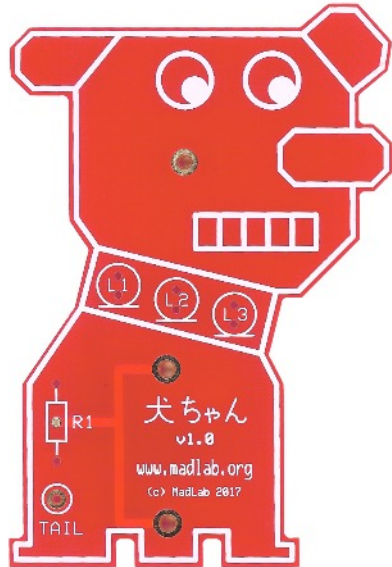


MR. DOG (INU-CHAN)

a cute little badge



Circuit board



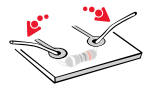
Coin cell retainer



Butterfly clip and pin



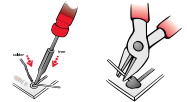
- 1 Identify the different components using the spotter chart.
- 2 Bend the legs of the resistor (R1) into a U-shape then fit it flat onto the picture side of the circuit board. Bend the legs outwards into a V-shape to hold it in place. It can be fitted either way around.



- 3 Fit the lights (L1, L2 and L3) to the board putting the shorter leg into the hole with the line. The shorter leg also has a flattened edge on the rim. Bend the legs away from each other.



- 4 Solder the legs of the components to the back side of the board then clip the legs close to each solder joint.



- 5 Add a small blob of solder to the middle of the metal square on the back side of the board to help make a better connection with the coin cell. Spread the solder around a little with the soldering iron so it is not too high then fit the coin cell retainer to this same side of the board within the marked outline. The bar that supports the coin cell should be next to the resistor solder joints. Solder the coin cell retainer on the front side of the board using plenty of solder to make the joints physically strong. See image overleaf.

- 6 Solder the tail to the front of the board (TAIL) then bend it into a curly shape.

- 7 Peel the backing from the two eyes and stick them to the head.

- 8 Insert a **CR2032** coin cell into the retainer with the positive (+) side uppermost. The lights should start flashing.

- 9 Fit the pin through the hole in the head and then through your clothing. Use the butterfly clip to hold your badge securely in place. The pin can be soldered in place if you wish.

